



+31 488 74 54 74
info@geurtsstrucks.com

Buskesdries 14
6673 DP,
Andelst
netherlands

Mercedes-Benz L 8X4 + FASSI F545RA.2.26 XE-DYNAMIC + JIB L426 KRAAN/KRAN/CRANE/GRUA

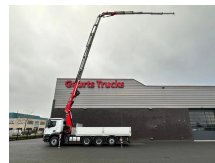
General-specifications

| | |
|------------------------|--|
| Id | 1789924 |
| Make | Mercedes-Benz |
| Type | L 8X4 + FASSI F545RA.2.26 XE-DYNAMIC + JIB L426 KRAAN/KRAN/CRANE/GRUA |
| Year | 2023 |
| Operating hours | 335 |
| Mileage | 9.956 km |
| Construction | Crane |
| Emissionclass | 6 |

Technical-specifications

| | |
|--------------------------------------|------------|
| First registration date | 02-08-2023 |
| Fuel | Diesel |
| Transmission | Automatic |
| Vehicle identification number | 4671 |
| Axle configuration | 8x4 |
| Axle count | 4 |
| Weight | 20.925 kg |
| Lifting height | 3.250 cm |
| Lifting capacity | 15.500 kg |

€ On request



Extras

| | |
|--------------------------------------|-----------------------|
| Air conditioning | LED lights |
| Air horn | Low-noise |
| Air suspension | Navigation system |
| Aluminium fuel tank | Particulate filter |
| Anti-lock braking system | PTO |
| Coupling | Radio/cassette player |
| Cruise control | Reversing camera |
| Electrically adjustable door mirrors | Speed limiter |
| Electrically operated windows | Stability control |
| Fog lights | Toolbox |
| Heavy duty engine brake | Visor |